

6bt5.9-G2 Machinery Cummins Diesel Genset 90kw 112.5kVA

Our Product Introduction

For more products please visit us on diesels-generators.com

Basic Information

- Place of Origin: China
- Brand Name: Minlong
- Certification: ISO9001
- Minimum Order Quantity: 1
- Price: Negotiation
- Packaging Details: Wood case
- Delivery Time: 10-15 days
- Payment Terms: L/C, D/A, D/P, T/T, Western Union, MoneyGram
- Supply Ability: 10000 set per week



Product Specification

- Model NO.: 6BT5.9-G2
- Cooling Method: Water Cooling
- Speed: HSS
- Usage: Common Units
- Excitation Mode: AC Rotating Exciter
- Silent Type Size: 2800×1100×1720(mm)
- Silent Type Weight: 1400kg
- Open Type Size: 2200× 1000× 1500(mm)
- Open Type Weight: 900kg
- Highlight: **Machinery Cummins Diesel Genset,
90kw Cummins Diesel Genset**



More Images



Product Description

Product Description:

Modern Design Open Type Cummins Diesel Generator 56kVA 45kw 4BTA3.9-G2

Engine model	6BT5.9-G2
Generator model	Stanford,S1L2-Y1
Enging Rated Power	90kVA 100kw

Standard configuration

General description:

1. Engine:4BTA3.9-G11
2. Meet ambient temperature radiator, belt drive cooling fan, fan safety cover
3. 24VDC Charging generator
4. generator:Single bearing generator, protection IP23, class H insulation
5. Dry air filter, fuel filter, oil filter
6. Daily oil tank, shock absorber
7. Standard control panel, floating charger, cylinder water preheater
8. 2×12VDC Start battery and battery connection Cable.
9. One set of smoke exhaust elbow, bellows, flange and silencer.
10. Information on generator set usage

Generator parameters					
Voltage(V)	Frequency(Hz)	phase sequence	Power factor	Rated current(A)	Generator Prime Power(kW/kVA)
400/230	50	3	0.8	144	90KW /112.5KVA

Relationship between engine power and altitude: if the altitude is above 1500 meters, the power will decrease by 4% every 300 meters.

Relationship between engine power and ambient temperature: the engine power is reduced by 3% for every 10 degrees above ambient temperature.

Sales commitment

The products provided are brand-new products, and each unit has undergone strict factory inspection.

All products provide warranty service.

The warranty period shall be 12 months after the unit passes the commissioning and acceptance or 1000 hours of cumulative operation, whichever expires first.

Engine parameters

Introduction of basic Parametes

Engine Model	6BT5.9-G2
Spray pattern	PTDirect injection
Number/arrangement of cylinders	4/L
Displacement/L	3.9 L
Cylinder diameter × stroke(mm)	102*120(mm)
Rated speed rpm	1500
Engine standby power kW/KVA	100/125
Engine rated power kW/KVA	80
Speed regulating system	Electron speed regulator

Generator parameters

Generator technical parameters	
Generator Model	MY POWER80-1-4/MY POWER 100-1-4.1
Phase sequence	3
Wiring method	Three-phase four-wire, Y-type winding
Number of bearings	1
Power factor	0.8
The protection grades	IP23
Altitude requirement	≤1000m
Field excitation	Brushless self-excitation
Insulation Grade/Temperature Rise Grade	H/H
Maximum overspeed	2250 rpm/min
Power	80KW/100KVA
Generator efficiency	≥95 %
Voltage	400V

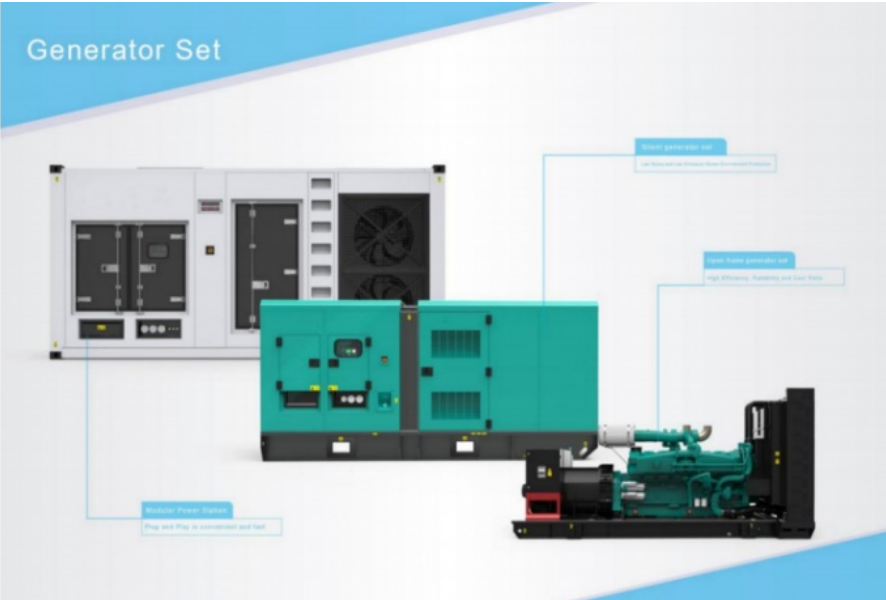
Generator set parameters	
Voltage setting range	≥±10%
Steady state voltage regulation rate	≤0.5%
Transient voltage deviation (100% sudden power reduction)	≤+17%
Transient Voltage Deviation (40% Sudden Power)	≤-6.5%
Voltage Stability Time (100% Sudden Power Reduction)	≤2.8S
Voltage Stability Time (40% Sudden Power)	≤2.5S
Frequency adjustment range	≥±5% Adjustable
Frequency volatility	≤±0.25%
Transient frequency deviation (100% sudden power reduction)	≤+8%
Transient frequency deviation (40% sudden power)	≤-5%
Frequency Recovery Time (100% Sudden Power Reduction)	≤1.48S
Frequency recovery time (40% sudden power)	≤1.35S

Quality Standard for Generator Sets	
Diesel generator sets are designed, produced and tested strictly in accordance with the standards and can be used in various environments, meeting the following relevant standards:	
ISO9001	

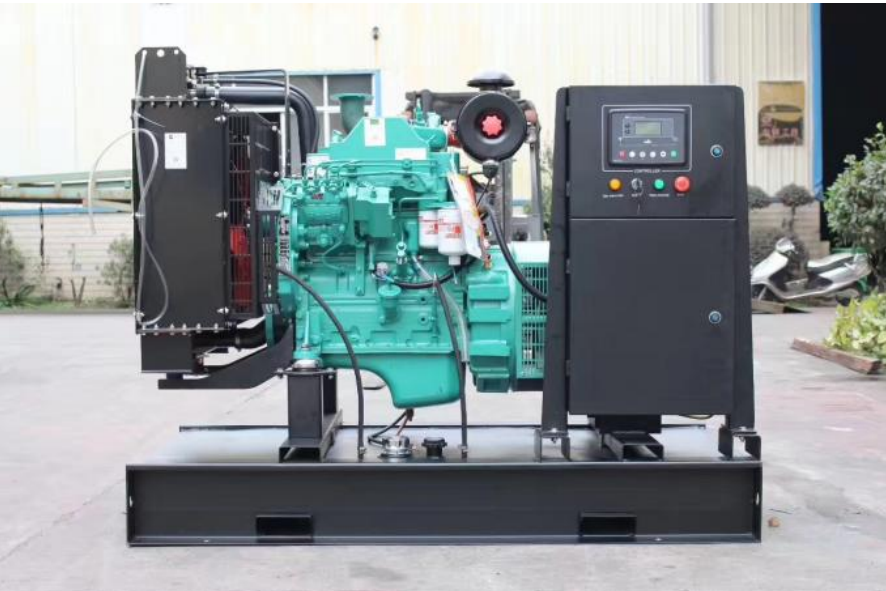
Data	
Atlas of Engine Parts and Original Factory Data	Generator Unit Maintenance Record Manual
Generator factory information	Installation and Operation Manual of Generator Set
Original factory data of control system	Acceptance Form for Installation and Commissioning of Generator Sets
Original Factory Test Report of Generator Set	Certificate of Origin of Generator Set

Optional accessories		
Engine	Generator	Electrical system
Intermediate water heating	Anti-condensation heater	Anti-condensation heater
Oil preheater	Permanent magnet excitation system(PMG)	Unit control screen with three remote functions
Air starting motor	Voltage Sag (Parallel)	ATS automatic load transfer screen
Heavy Air Filter for Desert	Generators of other temperature rise grades	Full-automatic parallel screen for multiple units
Heavy duty secondary muffler	RTD temperature sensor, 2 per phase	Remote control system separate from unit

Fuel system	Other	Cooling system
Base tank	Rain-proof unit	Split water tank
Oil - water separator	Static sound box generator set	Remote water tank
Fully automatic oil supply system	Vehicle-mounted power generation vehicle	Heat exchanger and external circulation cooling tower
Buried fuel tank	Towing generator set	Marine cooling system

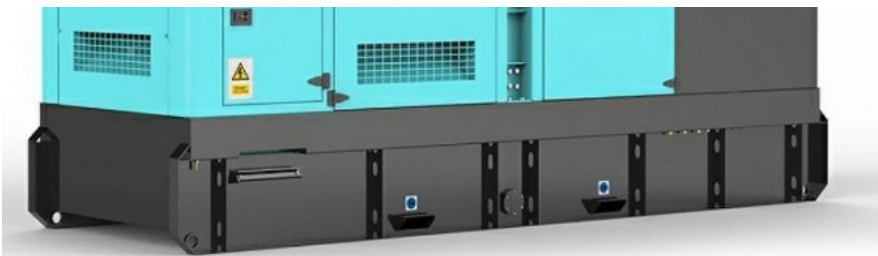


1. High quality: use high-quality materials, establish a strict quality control system, and assign special personnel to be responsible for each production link from raw material procurement to assembly.
2. Professional R & D center: we employ designers with 15 years of working experience in diesel generator set industry and have been constantly improving our products.
3. Fast delivery: many goods are in stock and can be delivered within 5-15 days of placing an order.
4. Accept small orders: accept low minimum order quantity. One is available.



The picture display of the Cummins open type unit shows that every time we leave the factory, we undergo full load testing to ensure that the machine can be quickly used by customers.





The picture display of Cummins silent unit shows that we have a complete installation process and factory debugging system. Can achieve perfect factory delivery.



We have a large inventory displayed in the factory workshop. Can deliver quickly to every customer.
 contacts:Yang
 Thank you for watching and looking forward to your contact.



Guangdong Minlong Electrical Equipment Co., Ltd.



(0086)13380288786



yangzhipeng@minlongpower.com



diesels-generators.com

Guanglong Industrial Zone, Foshan, Guangdong, China